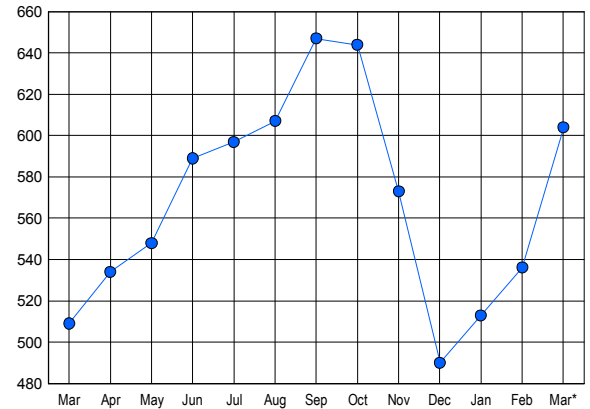


LISTINGS

Price Range	New This Month			Total Actives		
	2015	2014	% Change	2015	2014	% Change
0 - 149,999	70	61	14.8	107	92	16.3
150,000 - 199,999	63	62	1.6	104	89	16.9
200,000 - 299,999	105	89	18.0	185	146	26.7
300,000 - 399,999	70	69	1.4	120	94	27.7
400,000 - 499,999	32	31	3.2	39	44	-11.4
500,000 - 599,999	11	16	-31.3	17	24	-29.2
600,000 - 699,999	6	2	200.0	7	6	16.7
700,000 - 799,999	2	5	-60.0	5	5	0.0
800,000 - 899,999	4	3	33.3	2	2	0.0
900,000 - 999,999	1	0	100.0	2	1	100.0
1,000,000 - 1,249,999	0	0	0.0	0	1	-100.0
1,250,000 - 1,499,999	3	1	200.0	4	1	300.0
1,500,000 +	8	5	60.0	12	4	200.0
TOTALS	375	344	9.0	604	509	18.7

INVENTORY TREND

Listings Active at End of Month

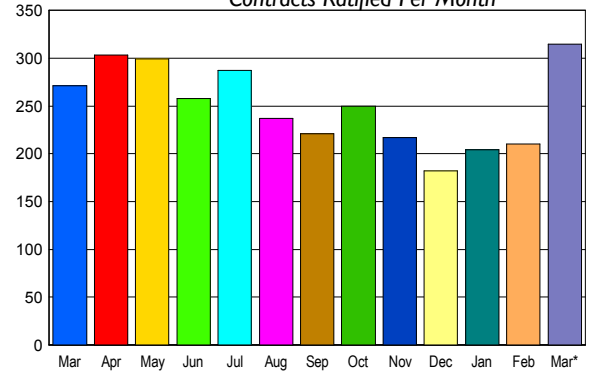


CONTRACTS

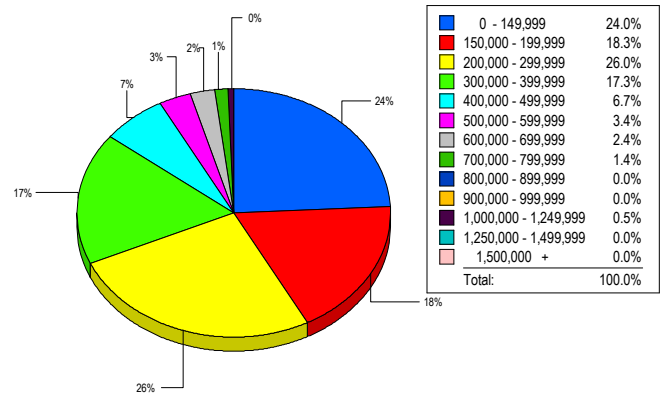
Price Range	New This Month			Year-To-Date		
	2015	2014	% Change	2015	2014	% Change
0 - 149,999	62	71	-12.7	161	179	-10.1
150,000 - 199,999	70	52	34.6	149	142	4.9
200,000 - 299,999	87	60	45.0	189	175	8.0
300,000 - 399,999	44	46	-4.3	96	92	4.3
400,000 - 499,999	18	23	-21.7	40	37	8.1
500,000 - 599,999	14	4	250.0	25	20	25.0
600,000 - 699,999	10	4	150.0	17	13	30.8
700,000 - 799,999	2	5	-60.0	6	10	-40.0
800,000 - 899,999	1	1	0.0	2	2	0.0
900,000 - 999,999	1	0	100.0	1	2	-50.0
1,000,000 - 1,249,999	1	0	100.0	1	1	0.0
1,250,000 - 1,499,999	1	2	-50.0	3	2	50.0
1,500,000 +	4	3	33.3	5	5	0.0
TOTALS	315	271	16.2	695	680	2.2

SALES TREND

Contracts Ratified Per Month



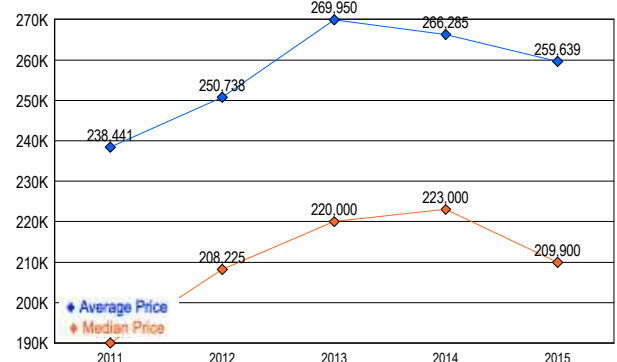
MARKET BY PRICE RANGE



SETTLEMENTS

Price Range	New This Month			Year-To-Date		
	2015	2014	% Change	2015	2014	% Change
0 - 149,999	50	50	0.0	141	138	2.2
150,000 - 199,999	38	34	11.8	111	93	19.4
200,000 - 299,999	54	51	5.9	118	140	-15.7
300,000 - 399,999	36	25	44.0	82	67	22.4
400,000 - 499,999	14	8	75.0	40	24	66.7
500,000 - 599,999	7	7	0.0	22	16	37.5
600,000 - 699,999	5	3	66.7	9	8	12.5
700,000 - 799,999	3	4	-25.0	3	9	-66.7
800,000 - 899,999	0	1	-100.0	0	3	-100.0
900,000 - 999,999	0	1	-100.0	0	1	-100.0
1,000,000 - 1,249,999	1	0	100.0	2	1	100.0
1,250,000 - 1,499,999	0	0	0.0	0	0	0.0
1,500,000 +	0	2	-100.0	3	5	-40.0
TOTALS	208	186	11.8	531	505	5.1

AVERAGE & MEDIAN PRICE



DATA SOURCE: Metropolitan Regional Information Systems, Inc. (MRIS)

NOTES: Properties not listed through this Multiple Listing Service are not reflected. The term "sales" represents ratified purchase contracts. Current year information is preliminary and subject to revision. Current year-to-date contract information may not equal the sum of the monthly contract totals reported in